

20  
22

**PRINCECRAFT®**  
**DOMINATE THE WATERS®**

**FISHING  
BOATS**





**CONCEPTION AND DESIGN**  
absolu.ca

**RESEARCH AND COPYWRITING**  
absolu.ca

**PHOTOGRAPHY**  
absolu.ca  
Benoit Brühmüller  
Claude Denis

Visit our Website:  
[princecraft.com](http://princecraft.com)  
1 800 395-8858



Check out our Princecraft®  
**2022 PONTONS AND DECK BOATS** catalog!

## ALWAYS READY TO TAKE ON MAJOR CHALLENGES!

In 2021, our main challenge has been to maintain our production capacity to meet our high volume of demand, and looking at our results, we are proud to be able to say mission accomplished.

This new model year is shaping up to be another very impactful one, with many challenges to be met, including those related to operations, procurement and manpower. Once again, we will have to reconcile all of our efforts and continue to focus on the issues that lie ahead of us: maintaining a strong and rigorous process in relation to Covid-19 to ensure the safety of our employees, developing a strategy in our supply chain to guarantee material coming from our suppliers, achieving operational excellence by improving our processes, increasing our production capacity while continuing to raise our standards of product quality and, finally, attracting and retaining talent from here and else-

**« [...] WE WILL HAVE TO RECONCILE  
ALL OF OUR EFFORTS AND CONTINUE  
TO FOCUS ON THE ISSUES THAT LIE  
AHEAD OF US [...] »**

where by becoming an employer of choice in our region.

Faithful to our brand, we are once again very pleased to present our product line that perfectly meets all our criteria, including innovation, elegance, performance and remarkable construction quality. We remain attentive to your needs and tastes, always trying to surpass ourselves in order to adequately meet your requirements. With our boats, you can proudly navigate in complete safety and enjoy wonderful moments with your family and friends.



How to discover our products? In addition to browsing through our beautiful catalogs or visiting your dealership, we invite you to surf our website, as we have developed a new digital approach where you can now see each model virtually, descriptive video clips and even some boats in action. What could be better than seeing the boat of your dreams as if you were there in real time?

I will conclude by saying that the strength of our team is the key to our success. Circumstances experienced worldwide have forced us to change certain things, and we have managed to adapt. Our team is composed of passionate people, proud and mobilized around a single objective: a commitment to offer you the best product possible for your greatest satisfaction.

Thank you for always trusting Princecraft® products!

**RODIER GRONDIN**, president

# SUMMARY

**PRINCECRAFT®: SOLIDLY BUILT  
FOR YOUR ADVENTURES ..... 4**

**WHAT DO A BRIDGE,  
AN OCEAN LINER,  
AN AIRCRAFT AND  
THE EIFFEL TOWER  
HAVE IN COMMON? ..... 8**

**ONE PIECE BOTTOM ..... 20**

## **FISHING BOATS 2022 MODELS**

### **PLATINUM SE SERIES**

Platinum SE 227 and 207 .....	10
Platinum SE 186 .....	12

### **KAPTURE® SERIES**

Kapture® 187 .....	14
--------------------	----

### **SPORT SERIES**

Sport 182 and 177 .....	16
Sport 172 and 172 MAX .....	18

### **XPEDITION® SERIES**

Xpedition® 200 .....	22
----------------------	----

### **DLX SERIES**

Hudson® 190 DLX WS and 170 DLX WS ..	24
Nanook® 168 DLX WS .....	26
Holiday® 162 DLX WS and SC .....	28
Holiday® 162 DLX WS MAX and SC MAX .	30

### **DL SERIES**

Amarok 166 DL WS and SC .....	32
Resorter® 160 DL SC .....	34

### **BT SERIES**

Hudson® 190 BT, Amarok 166 BT, Resorter® 160 BT and Yukon® 140 BT....	36
--	----

### **UTILITIES AND CARTOPS**

Starfish® 16 L WT and WT, Springbok® 16 L WT and WT .....	38
Yukon® 14 L WT and WT, Fisherman 14 and Ungava® 12 .....	39
Scamper® 14 and Seasprite® 12 .....	40

TECHNICAL DRAWINGS .....	42
COLORS AND FINISHING TOUCHES .....	44
CUSTOM MULTIFUNCTION TRAILERS .....	46
INGENIOUS LIVEWELLS .....	47
CANVAS AND COVERS: A PERFECT FIT .....	48
PRINCETRAK/RAILBLAZA® SYSTEM AND FISHING PACKAGE .....	49
OPTIONAL EQUIPMENT .....	50



# **PRINCECRAFT®:** **SOLIDLY BUILT FOR YOUR ADVENTURES**

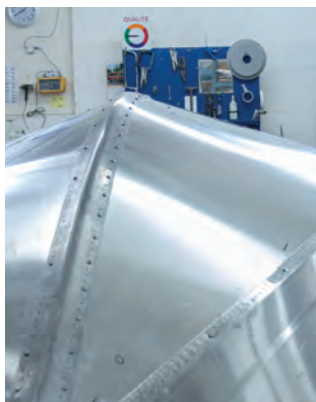
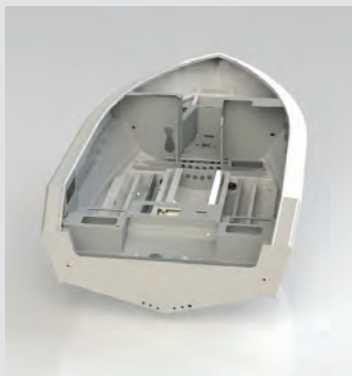
YOU DESERVE A BOAT THAT'S ERGONOMICALLY DESIGNED TO GIVE YOU A GREAT EXPERIENCE. AT PRINCECRAFT®, WE UNDERSTAND THAT A SUCCESSFUL DAY ON THE WATER DEPENDS LARGELY ON HOW COMFORTABLE YOU ARE ON BOARD YOUR BOAT AND HOW WELL YOU CAN ORGANIZE YOUR SPACE. SO WE PUT OUR EXPERTISE TO WORK TO ALLOW YOU TO FOCUS ON WHAT'S IMPORTANT: THE FUN OF FISHING AND SPENDING TIME WITH YOUR FAMILY.





## STATE OF THE ART DESIGNS

- › Our research and development department prides itself in offering the most innovative technologies. For each of its boats, the Princecraft® team uses the best CNC digital cutting equipment, an accurate computer-aided design (CAD) system and 3D modeling.



## HIGH-PERFORMANCE HULLS

- › Princecraft® hulls are among the most stable and durable on the market. With their wide H36 aluminum bottom and riveted finish, they provide smooth, accurate navigation.

## DURABLE CONSTRUCTIONS

- › In addition to staying on the cutting edge of performance in the design of our boats, we use premium parts, including longitudinal and transversal stiffeners, solid aluminum extrusions and rivets and several stainless steel parts.



## PREMIUM FINISH

- › Princecraft® is proud to present a timeless boat with the perfect finish. Riveted joints, invisible wiring, aluminum extrusions and quality paint...everything is there to turn heads on the lake!



## OPTIMAL ERGONOMICS FOR LONG FISHING DAYS

- › Long days of fishing can be tiring. But Princecraft® boats were designed with this in mind. Our helm stations have everything within easy reach and include space for you to add your own gear. Our optional captain's chairs give you maximum comfort to steer and rest if you need to.



## ESSENTIAL FISH TANK SYSTEM

- › Our two-pump fish tanks (ProFlo™ and ProFlo™ Plus) are designed to keep your catch fresh from the river to your home, whether your boat is running or docked.





## PEACE OF MIND FOR YOUR DAY ON THE WATER

PRINCECRAFT® UNDERSTANDS THAT GETTING ON THE WATER IS MORE THAN JUST AN ACTIVITY - IT'S A PASSION. THAT'S WHY WE GO TO GREAT LENGTHS TO ENSURE THAT OUR BOATS ARE SAFE AND WORRY FREE. EACH OF OUR BOATS IS TESTED AND VERIFIED AT THE FACTORY BEFORE BEING SHIPPED TO THE DEALER.

- › Each hull is immersed in a basin of pressurized water to validate its water tightness.
- › Many of our hulls have a double aluminum bottom to strengthen the stress points.
- › Our solid aluminum rivets prevent leaks and give you peace of mind. Each rivet is tested one by one by a factory technician.



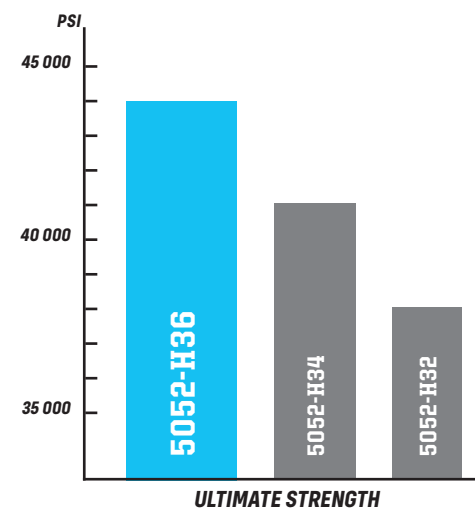
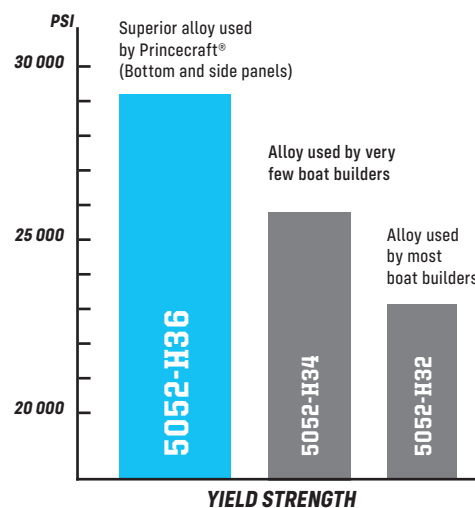
## 5052-H36 ALLOY: A DURABLE AND FLEXIBLE ALUMINUM

To make an alloy (a mixture of aluminum and other elements, such as magnesium), large blocks of aluminum are pressed in rollers. The more the aluminum is crushed when it comes out of the press, the more rigid it will be and the better its resistance to impact and deformation.

At Princecraft®, we opted for 5052-H36 aluminum alloy, which is about 25% stronger than that of our competitors, who use H34 or H32 instead. Its yield strength properties and ultimate strength make it the material of choice for boat design. For this reason, all Princecraft® boats are made with H36 aluminum alloy for the bottom and sides, since 1954.

**Yield strength** is the limit to which a material can deform and return to its original shape. Once the limit of elasticity is exceeded, the material (in this case, H36 aluminum) will not return to its original shape and will remain marked. This means that your H36 aluminum shell will be more flexible and less dented when in contact with rocks.

**Ultimate strength** is the pressure or weight a material can withstand before breaking. H36 aluminum can withstand impacts of up to 44,000 pounds per square inch, preventing your boat from cracking and leaking.



\* Study conducted by Alcoa Innovation in 2011





## **H36 ALUMINUM AND SUSTAINABLE DEVELOPMENT**

**DID YOU KNOW THAT ALUMINUM IS A MATERIAL THAT CAN BE RECYCLED... ENDLESSLY? YES, AND H36 MARINE ALUMINUM IS NO EXCEPTION. IN ADDITION TO BEING 100% RECYCLABLE, IT RETAINS THE PHYSICAL PROPERTIES HIGHLY VALUED BY BOATERS WHO CHOOSE PRINCECRAFT®: DURABILITY, IMPACT RESISTANCE AND MALLEABILITY.**



## **WHY ALUMINUM?**

It's no surprise to still see almost 40-year-old Princecraft® boats on the water. That's because our premium materials, especially H36 aluminum, make our boats durable. This aluminum alloy offers unmatched strength and resistance to impact and the elements (such as rocky piers and branches), so you can dock on rough shores without worrying about cracking your boat.

Compared to a fiberglass boat, an aluminum boat is light, allowing it to be on plane at low speeds and be easier to move. You can transport your boat on the road without having to buy a new, more powerful vehicle. Your aluminum boat is also safer and has better resale value on the market, while having minimal maintenance costs.

# **PRINCECRAFT® LOOKS TO THE FUTURE**

Princecraft® understands that your needs can change over time. Do you want an adventure with a better performing deck boat? Want to enjoy long days of adventure and more comfort? No problem. With our quality boats, you are assured of an excellent resale value in the future. And if something should happen in the meantime, you're covered by our limited lifetime warranty program - one of the best in the industry. That's what choosing Princecraft® is all about.







# WHAT DO A BRIDGE, AN OCEAN LINER, AN AIRCRAFT AND THE EIFFEL TOWER HAVE IN COMMON?

*WHEN IT COMES TO DESIGNING DURABLE INFRASTRUCTURES THAT WILL BE SUBJECTED TO HIGH STRESS, TEMPERATURE VARIATIONS AND SUSTAINED WEAR, IT IS NO WONDER THAT INDUSTRIES TURN TO RIVETING. WITH ITS HIGH TOLERANCE TO NATURE'S ELEMENTS, RIVETING IS THE FIRST CHOICE.*

As a result, we can see riveted structures everywhere we go. San Francisco's Golden Gate, opened in 1937, the Eiffel Tower in Paris, standing since 1889, and, of course, some of Princecraft®'s nearly 40-year-old boats! In fact, all of our boats are built with solid aluminum rivets.



## RIVETING: A DURABLE ASSEMBLY METHOD

When it comes to fastening components, Princecraft® uses rivets instead of welds for exceptional strength and durability.

- › The aluminum in a **welded joint** will be subjected to extreme heat to fuse the parts in question. This heat, while effective, changes the mechanical properties of the H36 aluminum. This means that the welded aluminum will lose its yield strength properties and will be more brittle to impact, thus susceptible to breakage.
- › **Riveted joints** are ultra-reliable and have a minimal margin of error since they are easy to inspect! This makes repairing your boat more convenient, and the risk of breakage is almost zero. Rivets are also very resistant to vibration, a very important quality when it comes to facing the waves and the ocean floor.



In case of breakage or leakage, a defective rivet is easy to detect and tighten, while a welded joint will require more handling and the heat of the repair will further change the properties of the aluminum, making it more brittle.







## **DID YOU KNOW?**

**BECAUSE PRINCECRAFT® REPRESENTS THE HIGHEST STANDARDS OF EXCELLENCE IN THE INDUSTRY, ALL RIVETS ON OUR BOATS ARE INSTALLED AND CHECKED ONE BY ONE BY OUR FACTORY TECHNICIANS. IF A RIVET DOES NOT MEET OUR STANDARDS, IT IS REINSTALLED AND INSPECTED AGAIN. OUR EMPLOYEES ALSO DOUBLE RIVET AT THE JUNCTION OF THE HULL BOTTOM WITH THE SIDES AND STERN OF THE BOAT FOR ADDED DURABILITY.**



## **THE RIVET'S PERFECT FINISH**

At Princecraft®, we understand that you want a flawless finish for your boat. That's why we prefer riveting over welding, because rivets give your boat the rugged, sporty look you want. Take to the water with confidence and be proud to drive one of the best boats in the industry!

### **RIVETED JOINTS**



### **WELDED JOINT**





# PLATINUM SE



## PLATINUM SE 227

SHOWN IN METALLIC RED

### WITH OPTIONS

- › Wash down system
- › Simrad® Package including multifunction Simrad® NSS EVO 3 touch screen (right screen)
- › Removable ski pylon and base
- › 2 heated reclining captain's chairs with adjustable armrests
- › Bow rider seat cushions
- › Trolling motor

### KEY STANDARD FEATURES

- › Bow raised casting platform with storage
- › Black anodized tempered glass windshield, with hidden frame and door
- › Simrad® Go7 multifunction touch screen with VesselView Link allowing instrumentation display, GPS functions, sonar, and downscan imaging
- › SeaStar® hydraulic steering system with tilt wheel
- › 200-watt AM/FM/Bluetooth® SonicHub2 Radio, SiriusXM® compatible with an optional module, and including an in-dash USB plug and 4 waterproof speakers with LED lights
- › 77 L/20 U.S. gal. bow and 64 L/17 U.S. gal. stern ProFlo™ Plus electric-filled aerated livewells
- › Deluxe heated convertible driver seat
- › 2 deluxe convertible seats
- › Large in-floor lockable rod organizer with tubes for 12 rods
- › ACS system (Advanced Circulation System): air intake allowing airflow of the in-floor rod organizer
- › Multifunction unit including tool support, cup holders, LED light, and 12V outlet
- › Aft raised casting platform with a pop-up privacy enclosure

	Center line	Beam	Chine width	Maximum depth	Approximate draft	Transom height	Approximate weight	Aluminum thickness (Bottom)	Aluminum thickness (Side)	Built-in gas tank	Maximum HP capacity	Maximum weight capacity	Maximum weight person capacity	Maximum person capacity
<b>227</b>	6.7 m (22'-0")	2.5 m (100")	2.1 m (84")	1.3 m (50")	0.9 m (34")	0.6 m (25")	915 kg (2017 lb.)	2.8 mm (.110")	1.8 mm (.072")	≤ 208 L (55 U.S. gal.)	261 kW (350 HP)	★ <b>P</b> 1141 kg (2517 lb.)	★ <b>P</b> 680 kg (1500 lb.)	★ <b>P</b> 11
<b>207</b>	6.1 m (20'-0")	2.5 m (100")	2.1 m (84")	1.3 m (50")	0.9 m (34")	0.6 m (25")	847 kg (1868 lb.)	2.8 mm (.110")	1.8 mm (.072")	≤ 208 L (55 U.S. gal.)	224 kW (300 HP)	★ <b>P</b> 959 kg (2114 lb.)	★ <b>P</b> 590 kg (1300 lb.)	★ <b>P</b> 9



## PLATINUM SE 227

SHOWN IN METALLIC RED

### WITH OPTIONS

- › Removable ski pylon and base
- › 2 heated reclining captain's chairs with adjustable armrests
- › Trolling motor



## PLATINUM SE 207

SHOWN IN METALLIC GREY (RED ACCENT)

### WITH OPTIONS

- › Removable ski pylon and base
- › 2 heated reclining captain's chairs with adjustable armrests
- › Trolling motor



- 1 Optional bow rider seat cushions
- 2 Storage under bow deck
- 3 Driver console (shown with Simrad® Package including multifunction Simrad® NSS EVO 3 touch screen (right screen))

- 4 Drawer under passenger console
- 5 Pop-up privacy enclosure in stern casting platform
- 6 Optional 2 heated reclining captain's chairs with adjustable armrests (passenger captain's chair shown)



AVAILABLE COLORS





# PLATINUM SE



## PLATINUM SE 186

SHOWN IN METALLIC BLUE

### WITH OPTIONS

- › Wash down system
- › Simrad® Package including multifunction Simrad® NSS EVO 3 touch screen (right screen)
- › Trolling motor
- › Snap-in textured marine mat

	Center line	Beam	Chine width	Maximum depth	Approximate draft	Transom height	Approximate weight	Aluminum thickness (Bottom)	Aluminum thickness (Side)	Built-in gas tank	Maximum HP capacity	Maximum weight capacity	Maximum weight person capacity	Maximum person capacity
<b>186</b>	5.6 m (18'-6")	2.4 m (95")	2.0 m (80")	1.2 m (46")	0.8 m (33")	0.6 m (25")	748 kg (1651 lb.)	2.8 mm (.110")	1.8 mm (.072")	≤ 140 L (37 U.S. gal.)	130 kW (175 HP)	♣ ★ 863 kg (1902 lb.)	♣ 525 kg (1156 lb.) ★ 517 kg (1140 lb.)	♣ 7 ★ 8



## KEY STANDARD FEATURES

- › Bow raised casting platform with storage
- › Black anodized tempered glass windshield, with hidden frame and door
- › Simrad® Go7 multifunction touch screen with VesselView Link allowing instrumentation display, GPS functions, sonar, and downscan imaging
- › SeaStar® hydraulic steering system with tilt wheel
- › 200-watt AM/FM/Bluetooth® SonicHub2 Radio, SiriusXM® compatible with an optional module, and including an in-dash USB plug and 4 waterproof speakers with LED lights
- › 64 L/17 U.S. gal. bow and stern ProFlo™ Plus electric-filled aerated livewells
- › Deluxe heated convertible driver seat
- › 2 deluxe convertible seats
- › In-floor lockable rod organizer for 6 rods
- › ACS system (Advanced Circulation System): air intake allowing airflow of the in-floor rod organizer
- › Multifunction unit including tool support, cup holders, LED light, and 12V outlet
- › Aft raised casting platform with a pop-up privacy enclosure

## PLATINUM SE 186

SHOWN IN METALLIC GREY (BLUE ACCENT)

### WITH OPTIONS

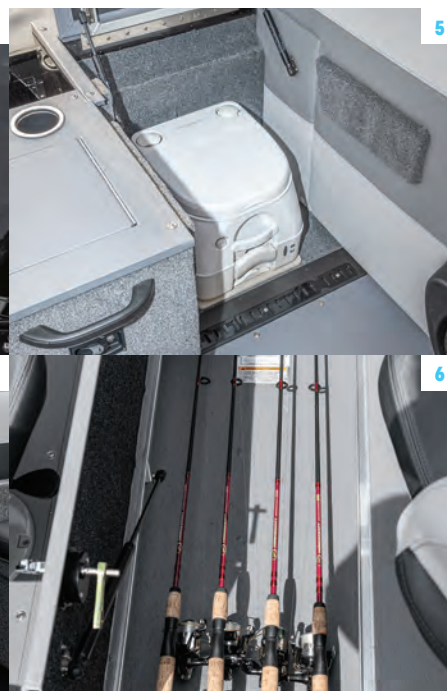
- › Wash down system
- › Trolling motor
- › Galvanized trailer



1



3



5



4



6

- 1 Storage, ice chest, and livewell integrated into the front casting platform
- 2 Optional snap-in textured marine mat
- 3 Stern boarding platform with anti-skid carpet
- 4 Lockable storage compartments in side panels (passenger side shown)
- 5 Optional head with holding tank and pump out system
- 6 In-floor lockable rod organizer for 6 rods



AVAILABLE COLORS





# KAPTURE®



## KAPTURE® 187

### WITH OPTIONS

- › Kicker® engine
- › Stern livewell station
- › Downrigger supports
- › Side benches
- › 2 reclining captain's chairs with adjustable armrests
- › Multifunction Simrad® Go7 touch screen, replacing the standard gauges
- › Simrad® Package including multifunction Simrad® NSS EVO 3 touch screen (right screen)

### KEY STANDARD FEATURES

- › Double reverse chine hull design
- › Black anodized walk-thru tempered glass windshield with door
- › Twin console with No-FeedBack™ dual cable steering system
- › Storage under consoles
- › Complete instrumentation: tachometer, voltmeter, speedometer, trim, and fuel gauges
- › 64 L/17 U.S. gal. bow ProFlo™ electric-filled aerated livewell
- › 2 deluxe folding seats
- › In-floor lockable rod organizer for 6 rods
- › 6 stern rod holders
- › High-capacity automatic electric bilge pump
- › 2 transducer mounting plates
- › Stern telescopic boarding ladder

	Center line	Beam	Chine width	Maximum depth	Approximate draft	Transom height	Approximate weight	Aluminum thickness (Bottom)	Aluminum thickness (Side)	Built-in gas tank	Maximum HP capacity	Maximum weight capacity	Maximum weight person capacity	Maximum person capacity
187	5.7 m (18'-7")	2.4 m (95")	2.0 m (80")	1.2 m (46")	0.8 m (33")	0.6 m (25")	726 kg (1600 lb.)	2.8 mm (.110")	1.8 mm (.072")	≤ 140 L (37 U.S. gal.)	130 kW (175 HP)	♣ ★ 863 kg (1902 lb.)	♣ 525 kg (1156 lb.) ★ 517 kg (1140 lb.)	♣ 7 ★ 8



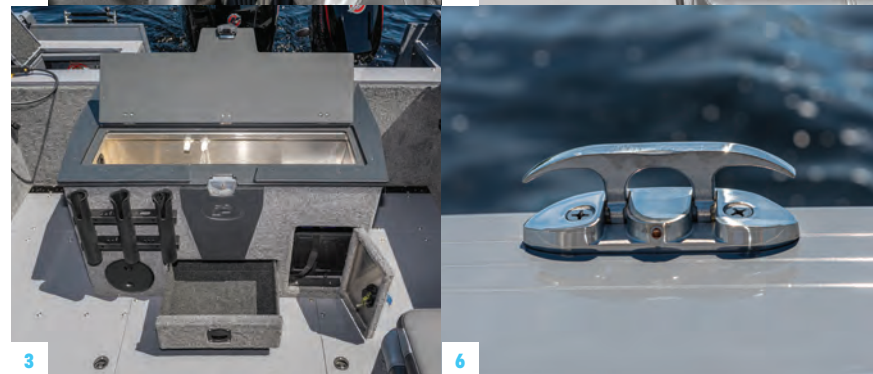
## KAPTURE® 187



## KAPTURE® 187

### WITH OPTIONS

- › Stern livewell station
- › 2 reclining captain's chairs with adjustable armrests
- › Storage unit (bow fishing platform)
- › 160-watts AM/FM/Bluetooth® Jensen® radio



- 1 Passenger console with glove box
- 2 Optional multifunction Simrad® Go7 touch screen (replacing the standard gauges)
- 3 Optional stern livewell station, including rod supports and storage
- 4 In-floor lockable rod organizer for 6 rods
- 5 Open storage compartment in side panels (passenger side shown)
- 6 4 stainless steel folding cleats



AVAILABLE COLOR





# SPORT



## SPORT 182

SHOWN IN ANTHRACITE GREY

### WITH OPTIONS

- › Sonar
- › Trolling motor
- › Techno Package
- › Bow rider seat cushions
- › Removable ski pylon

### KEY STANDARD FEATURES

- › Reverse chine hull design (double reverse chine hull design on Sport 182)
- › Bow raised casting platform
- › Black anodized walk-thru tempered glass windshield with door
- › Twin console with No-FeedBack™ dual cable steering system
- › Storage under driver console with extensible cargo net
- › Complete instrumentation: tachometer, speedometer, trim, and fuel gauges
- › 64 L/17 U.S. gal. bow and 77 L/20 U.S. gal. stern ProFlo™ electric-filled aerated livewells
- › In-floor lockable rod organizer for 4 rods (6 for Sport 182)
- › Electric bilge pump
- › Stern telescopic boarding ladder

### SPORT 182

- › Deep-cycle battery storage under bow casting platform
- › Rear flip-up full-width including 3 fold-down seats that can be converted into a rear casting platform

### SPORT 177

- › Deep-cycle battery storage under the port side console
- › 2 fold-down jump seats (1/3 - 2/3) that can be converted into a rear casting platform

	Center line	Beam	Chine width	Maximum depth	Approximate draft	Transom height	Approximate weight	Aluminum thickness (Bottom)	Aluminum thickness (Side)	Built-in gas tank	Maximum HP capacity	Maximum weight capacity	Maximum weight person capacity	Maximum person capacity
<b>182</b>	5.6 m (18'-5")	2.5 m (98")	2.1 m (84")	1.2 m (46")	0.8 m (33")	0.6 m (25")	680 kg (1500 lb.)	2.8 mm (.110")	1.8 mm (.072")	≤ 140 L (37 U.S. gal.)	112 kW (150 HP)	★ 722 kg (1592 lb.)	★ 450 kg (992 lb.) ★ 422 kg (930 lb.)	★ 6 ★ 7
<b>177</b>	5.3 m (17'-5")	2.3 m (92")	1.9 m (75")	1.0 m (40")	0.8 m (30")	0.6 m (25")	603 kg (1330 lb.)	2.5 mm (.100")	1.8 mm (.072")	≤ 91 L (24 U.S. gal.)	112 kW (150 HP)	★ 713 kg (1572 lb.)	★ 450 kg (992 lb.) ★ 413 kg (910 lb.)	★ 6 ★ 7



## SPORT 182

SHOWN IN ANTHRACITE GREY

### WITH OPTIONS

- › Sonar
- › Trolling motor
- › Techno Package

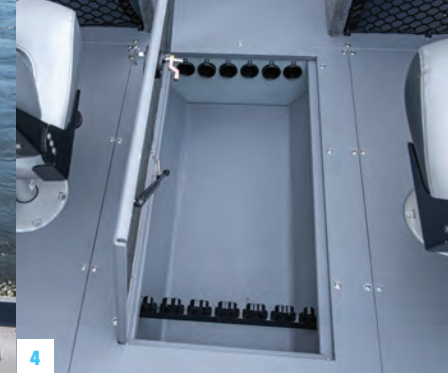


## SPORT 177

SHOWN IN BLUE

### WITH OPTIONS

- › Sonar
- › Trolling motor
- › Techno Package
- › 2 deluxe folding seats



1 Optional removable ski pylon

2 Driver console

3 Lockable storage in driver side panel

4 In-floor lockable rod organizer for 6 rods (Sport 182 shown)

5 Folding seats

6 64 L/17 U.S. gal. bow ProFlo™ electric-filled aerated livewell



AVAILABLE COLORS



DOMINATE THE WATERS® 17



# SPORT



## SPORT 172 MAX

WITH OPTION

- › Downrigger supports

## KEY STANDARD FEATURES

- › Reverse chine hull design
- › Bow raised casting platform with storage
- › Black anodized walk-thru tempered glass windshield with door
- › Twin console with No-FeedBack™ steering system
- › Storage under consoles with extensible cargo nets (no cargo nets in Sport 172 MAX)
- › Complete instrumentation: tachometer, speedometer, trim, and fuel gauges
- › Electric bilge pump
- › Stern telescopic boarding ladder
- › Removable rear flip-up fullwidth bench seat, including fold-down seats
- › Black rotomolded consoles
- › Tilt steering wheel
- › Driver seat on slider
- › 160-watt AM/FM/Bluetooth® Jensen® Stereo
- › Bow rider seat cushions
- › 64 L/17 U.S. gal. stern SportFlo™ electric-filled aerated livewell
- › Removable ski pylon
- › Bimini sun top connected to windshield, including the structure
- › Trailer cover

## SPORT 172

- › 64 L/17 U.S. gal. bow and stern SportFlo™ electric-filled aerated livewells
- › In-floor lockable rod organizer for 4 rods
- › Rear flip-up full-width bench seat, including 2 fold-down seats

	Center line	Beam	Chine width	Maximum depth	Approximate draft	Transom height	Approximate weight	Aluminum thickness (Bottom)	Aluminum thickness (Side)	Built-in gas tank	Maximum HP capacity	Maximum weight capacity	Maximum weight person capacity	Maximum person capacity
<b>172</b>	5.3 m (17'-5")	2.3 m (91")	1.9 m (75")	1.0 m (39")	0.8 m (30")	0.6 m (25")	625 kg (1377 lb.)	2.5 mm (.100")	1.8 mm (.072")	≤ 91 L (24 U.S. gal.)	93 kW (125 HP)	★ ★ 703 kg (1549 lb.)	★ 450 kg (992 lb.)	★ 6
<b>172 MAX</b>	5.3 m (17'-5")	2.3 m (91")	1.9 m (75")	1.0 m (39")	0.8 m (30")	0.6 m (25")	602 kg (1327 lb.)	2.5 mm (.100")	1.8 mm (.072")	≤ 91 L (24 U.S. gal.)	86 kW (115 HP)	★ ★ 703 kg (1549 lb.)	★ 450 kg (992 lb.)	★ 6
													★ 420 kg (926 lb.)	★ 7



## SPORT 172

SHOWN IN BLACK

### WITH OPTIONS

- › Sonar
- › Trolling motor
- › Techno Package



## SPORT 172 MAX



- 1 Stern telescopic boarding ladder
- 2 Storage under console with extensible cargo nets (no cargo nets in Sport 172 MAX)
- 3 Driver console with tilt steering wheel (Sport 172 MAX console shown)
- 4 Multifunction Simrad® Go7 touch screen (replacing the standard gauges) (available as an option, except on Sport 172 MAX)
- 5 Optional 160-watt AM/FM/Bluetooth® Jensen® Stereo (standard on Sport 172 MAX)
- 6 Passenger console with glove box (Sport 172 and 177 console shown)



AVAILABLE COLORS



Red = Sport 172 MAX only

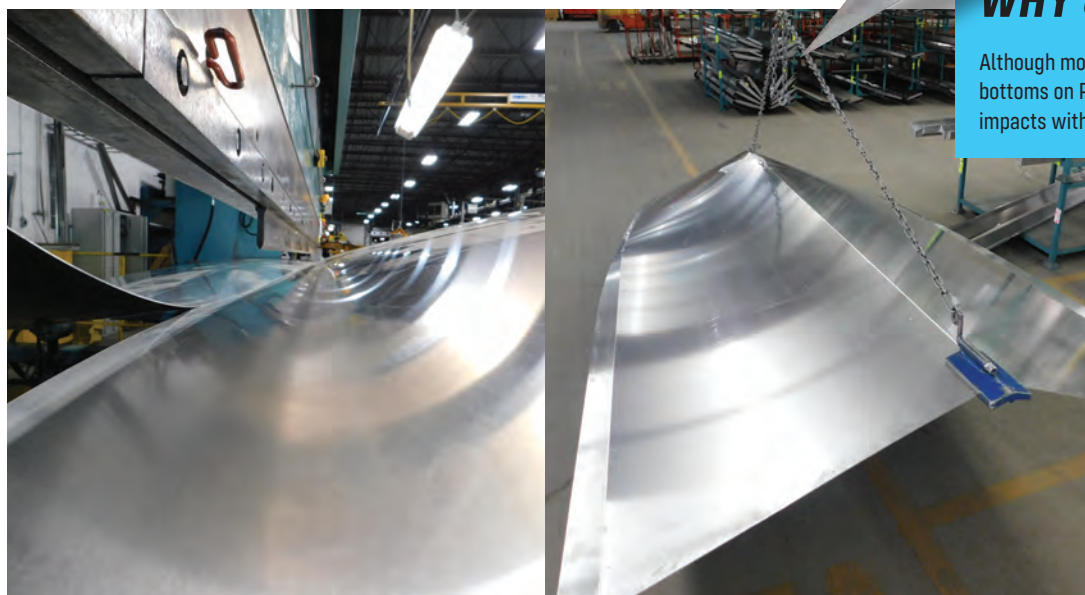
**DOMINATE THE WATERS®** 19



# ONE PIECE BOTTOM

AT PRINCECRAFT®, WE ARE CONSTANTLY INNOVATING TO GIVE YOU THE ULTIMATE OUTDOOR GETAWAY. WHILE OUR COMPETITORS USE TWO OR EVEN THREE PIECES OF ALUMINUM TO BUILD THEIR HULLS, PRINCECRAFT® DISTINGUISHES ITSELF BY USING A SINGLE PIECE OF H36 SEAMLESS ALUMINUM, CUT AND BENT TO FORM THE BOTTOM OF THE BOATS.

This manufacturing technique offers many advantages, including reduced vibration at high speeds, unmatched strength, near perfect water tightness and outstanding resale value. Thus, you can focus on what's important... landing the biggest catch possible.



## WHY CHOOSE H36 ALUMINUM?

Although more expensive and difficult to work with, H36 alloy is the material of choice for one-piece bottoms on Princecraft® boats. Its stiffness, ultimate strength and yield strength mean it can withstand impacts without deforming, while limiting cracking.

**Yield strength** is the limit to which a material can deform and return to its original shape. Once the yield limit is exceeded, the material (in this case, H36 aluminum) will not return to its original shape and will remain marked. In the field, this means that your H36 aluminum shell will be more flexible and less dented when in contact with rocks.

**Ultimate strength** is the amount of pressure or weight a material can withstand before it breaks. H36 aluminum can withstand impacts of up to 44,000 pounds per square inch, preventing your boat from cracking and leaking.



## **PRINCECRAFT® HULLS: AN INNOVATIVE DESIGN**

We all know that the strength of your boat is paramount to a worry-free day of escape. That's why Princecraft®'s research and development team has the expertise and know-how to deliver state-of-the-art technology. Our factories are configured to produce high-performance hulls made from the best material on the market: 5052-H36 aluminum alloy. You can land on a rocky beach without worrying and fish anywhere you want.

### **PRINCECRAFT® HULLS ADD VALUE TO YOUR BOATING EXPERIENCE BY PROVIDING THE FOLLOWING:**

- › superior stability because of strong, wide one-piece hull bottoms;
- › outstanding watertightness thanks to the weld-free bottom;
- › to be on plane quicker by means of reverse chine, lined with H36 aluminum from the bow to the middle of the boat;
- › resistance to warping and cracking because of H36 aluminum's superior properties;
- › comfortable, splash-proof navigation with our up-to 18 degree pronounced V-shaped hulls.

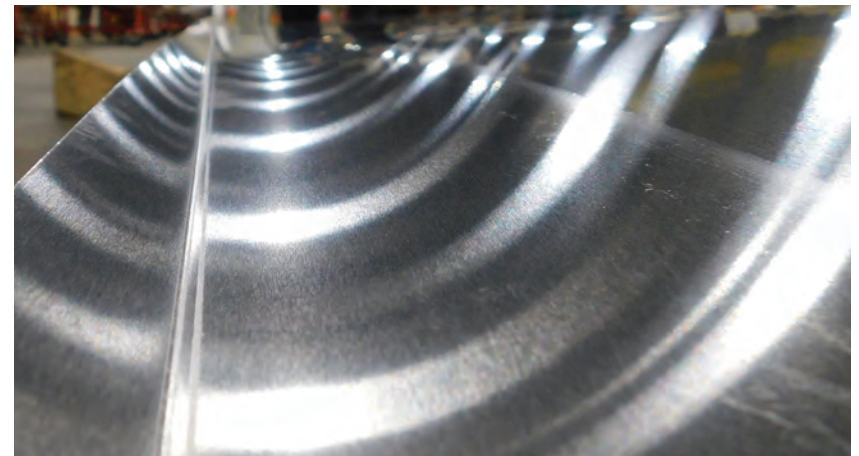


## **DOUBLE PLATED BOTTOM : STRENGTH AND DURABILITY**



Because the bulk of wave impact is absorbed at the bow of your boat, it is critical that the bow be as strong as possible. Princecraft®, therefore, has doubled the thickness of the bottom of its boats, especially its fishing boats. An extra layer of aluminum is attached to the hull ply.

To transfer the tension caused by waves to the side panels, this 5052-H36 aluminum thickness is attached with rivets from the bow to the middle of the boat. By choosing a double-bottom boat, you are guaranteed greater solidity on the water and an outstanding navigational experience.





# XPEDITION®



## XPEDITION® 200

SHOWN IN BLACK

### WITH OPTIONS

- › Trolling motor
- › Bicycle Seat Package
- › Sonar/GPS Humminbird® Helix 7 (console built-in)
- › Removable ski pylon

	Center line	Beam	Chine width	Maximum depth	Approximate draft	Transom height	Approximate weight	Aluminum thickness (Bottom)	Aluminum thickness (Side)	Built-in gas tank	Maximum HP capacity	Maximum weight capacity	Maximum weight person capacity	Maximum person capacity
<b>200</b>	6.1 m (20'-0")	2.3 m (92")	2.0 m (78")	0.9 m (37")	0.8 m (33")	0.6 m (25")	664 kg (1463 lb.)	2.5 mm (.100")	1.8 mm (.072")	≤ 144 L (38 U.S. gal.)	186 kW (250 HP)	★ 841 kg (1854 lb.)	★ 472 kg (1040 lb.)	★ 8



## KEY STANDARD FEATURES

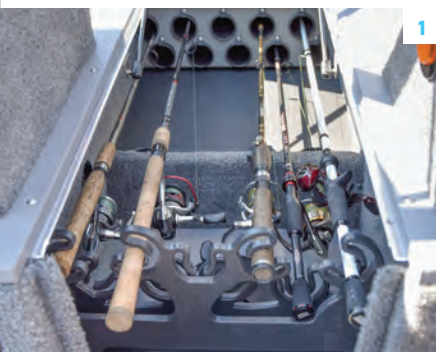
- › Bow raised casting platform with lockable tight storage
- › Large lockable rod organizer with tubes for 10 rods
- › ACS system (Advanced Circulation System): air intake allowing air flow into the two large storage compartments and rod organizer (bow platform)
- › No-FeedBack™ steering system with dual cable
- › 12V, 24V or 36V bow trolling motor plug and receptacle with wiring harness
- › Storage under consoles with extensible cargo nets
- › Complete instrumentation: tachometer, voltmeter, speedometer, trim, and fuel gauges
- › 64 L/17 U.S. gal. bow and 77 L/20 U.S. gal. stern isolated ProFlo™ Plus electric-filled aerated livewells
- › Storage with tubes and support for 4 rods (passenger side)
- › Rigging tube under flooring (from stern to console and from console to bow)
- › PrinceTrak system: extrusion allowing onboard tool fixing
- › High capacity electric bilge pump
- › 2 transducer mounting plates

## XPEDITION® 200

SHOWN IN BLACK

### WITH OPTIONS

- › Trolling motor
- › Removable ski pylon



1



3



5



2



4



6

- 1 Large in-floor lockable rod organizer with tubes for 10 rods
- 2 77 L/20 U.S. gal. stern ProFlo™ Plus electric-filled aerated livewell
- 3 Passenger console with glove box (except SC version - side console)
- 4 Lockable tight storage integrated into the bow casting platform
- 5 64 L/17 U.S. gal. bow ProFlo™ Plus electric-filled aerated livewell
- 6 Dash panel with complete instrumentation (shown with optional Built-in Sonar/GPS Humminbird® Helix 7)



AVAILABLE COLORS



M = Matte Black (optional)

**DOMINATE THE WATERS® 23**



# HUDSON® DLX



## HUDSON® 190 DLX WS

SHOWN WITH TOURNAMENT FISHING TFT PACKAGE OPTION  
(INCLUDING ANTHRACITE GREY AND BLACK EXTERIOR COLORS)

### WITH OPTIONS

- › Deluxe Package
- › Tilt steering and slider for captain's chair
- › Sonar/GPS Humminbird® Helix 7 (console built-in)
- › Trolling motor

### KEY STANDARD FEATURES

- › Reverse chine hull design
- › Bow and aft raised casting platforms with storage
- › Black anodized walk-thru tempered glass windshield with door
- › Twin console with No-FeedBack™ dual cable steering system
- › 12V or 24V bow trolling motor plug and receptacle with wiring harness
- › Drawer under driver console
- › Complete instrumentation: tachometer, voltmeter, speedometer, trim, and fuel gauges
- › 77 L/20 U.S. gal. stern SportFlo™ electric-filled aerated livewell
- › Large lockable rod organizer with tubes for 10 rods
- › 2 folding seats
- › Electric bilge pump
- › Deep self-draining splashwell



### FISHING PACKAGE

TO KNOW MORE ABOUT THIS PACKAGE, SEE PAGE 49.

	Center line	Beam	Chine width	Maximum depth	Approximate draft	Transom height	Approximate weight	Aluminum thickness (Bottom)	Aluminum thickness (Side)	Built-in gas tank	Maximum HP capacity	Maximum weight capacity	Maximum weight person capacity	Maximum person capacity
<b>190 WS</b>	5.8 m (19'-0")	2.3 m (91")	2.0 m (78")	0.9 m (35")	0.8 m (32")	0.6 m (25")	669 kg (1475 lb.)	2.5 mm (.100")	1.8 mm (.072")	≤ 95 L (25 U.S. gal.)	130 kW (175 HP)	★ ★ 726 kg (1600 lb.)	★ 375 kg (827 lb.)	★ 5
<b>170 WS</b>	5.4 m (17'-10")	2.3 m (91")	2.0 m (78")	0.9 m (35")	0.8 m (33")	0.6 m (25")	649 kg (1430 lb.)	2.5 mm (.100")	1.8 mm (.072")	≤ 95 L (25 U.S. gal.)	112 kW (150 HP)	★ ★ 685 kg (1510 lb.)	★ 375 kg (827 lb.)	★ 5
													★ 339 kg (748 lb.)	★ 6





## HUDSON® 190 DLX WS

SHOWN IN BLUE

### WITH OPTIONS

- › Fishing Package
- › Trolling motor
- › Deluxe decal package



## HUDSON® 170 DLX WS

SHOWN IN BLACK

### WITH OPTION

- › Trolling motor



- 1 Driver console (shown with Sonar/GPS Humminbird® Helix 7 (built-in) and Tilt steering mechanism and slider for driver seat options)
- 2 Drawer under driver console
- 3 Optional RSP Combo: removable aft flip seats and 2 cup holders

- 4 77 L/20 U.S. gal. stern SportFlo™ electric-filled aerated livewell
- 5 Storage under bow casting platform
- 6 Large in-floor lockable rod organizer with tubes for 10 rods



AVAILABLE COLORS





# NANOOK® DLX



## NANOOK® 168 DLX WS

SHOWN IN ANTHRACITE GREY

### WITH OPTIONS

- > Deluxe Package
- > Sonar
- > Trolling motor
- > Fishing Package

	Center line	Beam	Chine width	Maximum depth	Approximate draft	Transom height	Approximate weight	Aluminum thickness (Bottom)	Aluminum thickness (Side)	Built-in gas tank	Maximum HP capacity	Maximum weight capacity	Maximum weight person capacity	Maximum person capacity
<b>168 WS</b>	5.0 m (16'-6")	2.2 m (88")	1.8 m (71")	0.8 m (33")	0.7 m (28")	0.5 m (20")	474 kg (1044 lb.)	2.2 mm (.087")	1.8 mm (.072")	≤ 72 L (19 U.S. gal.)	86 kW (115 HP)	★ ★ 600 kg (1323 lb.)	★ 300 kg (661 lb.) ★ 318 kg (700 lb.)	★ 4 ★ 5



## KEY STANDARD FEATURES

- › Reverse chine hull design
- › Bow and aft raised casting platforms with storage
- › Black anodized walk-thru tempered glass windshield with door
- › Twin console with No-FeedBack™ steering system
- › 12V or 24V bow trolling motor plug and receptacle with wiring harness
- › Complete instrumentation: tachometer, speedometer, trim, and fuel gauges
- › 61 L/16 U.S. gal. stern SportFlo™ electric-filled aerated livewell
- › Large lockable rod organizer with tubes for 6 rods into the bow platform
- › 2 folding seats
- › Electric bilge pump
- › Deep self-draining splashwell

## FISHING PACKAGE

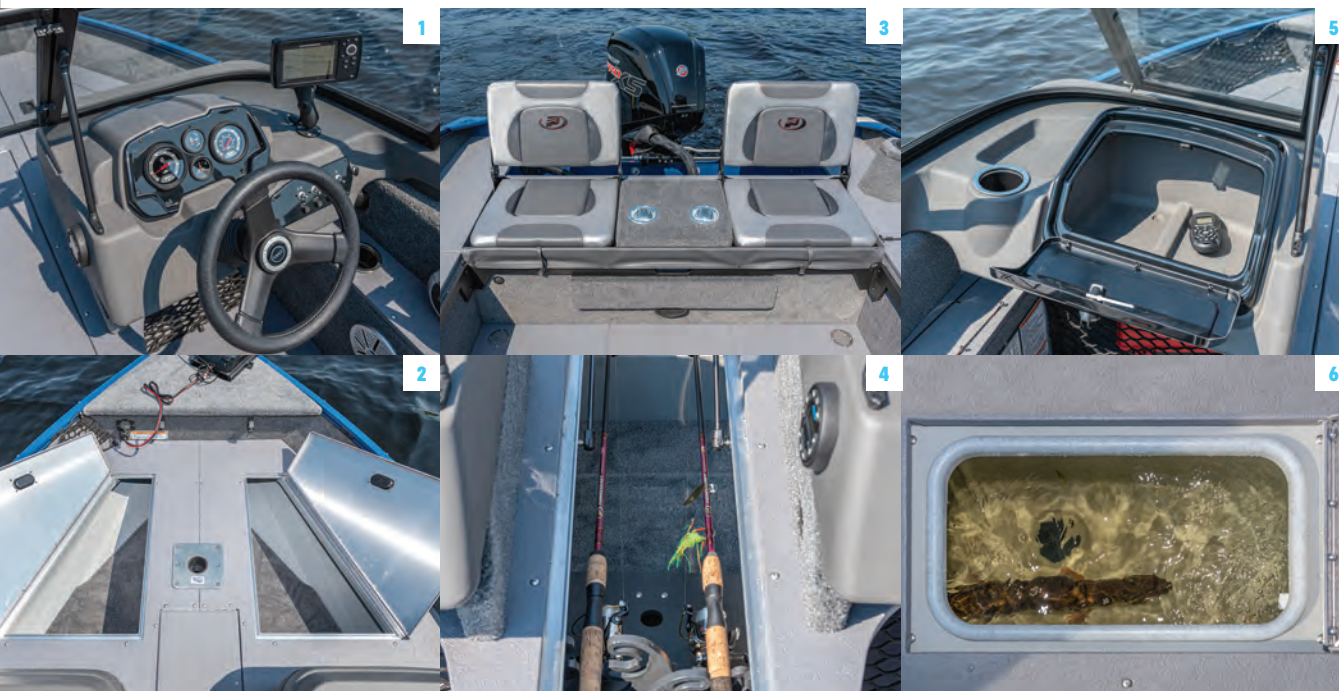
TO KNOW MORE ABOUT THIS PACKAGE, SEE PAGE 49.

## NANOOK® 168 DLX WS

SHOWN IN RED

### WITH OPTIONS

- › Sonar
- › Trolling motor
- › Deluxe decal package



- 1 Driver console (shown with Sonar/GPS Humminbird® Helix 5 G2 and Tilt steering mechanism and slider for driver seat options)
- 2 Storage under bow casting platform
- 3 Optional RSP Combo: removable aft flip seats and 2 cup holders
- 4 Large in-floor lockable rod organizer with tubes for 6 rods
- 5 Passenger console with glove box
- 6 61 L/16 U.S. gal. stern SportFlo™ electric-filled aerated livewell



AVAILABLE COLORS 



# HOLIDAY® DLX



## HOLIDAY® 162 DLX WS

SHOWN IN BLACK  
WITH OPTIONS

- › Deluxe Package
- › RSP Combo: removable aft flip seats
- › Sonar
- › Fishing Package
- › Trolling motor

## KEY STANDARD FEATURES

- › Reverse chine hull design
- › Bow and aft raised casting platforms with storage
- › Lockable 7-foot rod storage without support
- › No-FeedBack™ steering system
- › 12V bow trolling motor plug and receptacle with wiring harness
- › Complete instrumentation: tachometer, speedometer, trim, and fuel gauges
- › 61 L/16 U.S. gal. bow SportFlo™ electric-filled aerated livewell
- › 2 folding seats
- › Electric bilge pump
- › Deep self-draining splashwell

## HOLIDAY® 162 DLX WS

- › Twin console with black anodized walk-thru tempered glass windshield with door

## HOLIDAY® 162 DLX SC

- › Side console with quick release smoked windscreen



## FISHING PACKAGE

TO KNOW MORE ABOUT THIS PACKAGE, SEE PAGE 49.

	Center line	Beam	Chine width	Maximum depth	Approximate draft	Transom height	Approximate weight	Aluminum thickness (Bottom)	Aluminum thickness (Side)	Built-in gas tank	Maximum HP capacity	Maximum weight capacity	Maximum weight person capacity	Maximum person capacity
<b>162 WS</b>	4.9 m (16'-2")	2.2 m (85")	1.8 m (69")	0.8 m (30")	0.7 m (26")	0.5 m (20")	435 kg (960 lb.)	2.2 mm (.087")	1.8 mm (.072")	≤ 72 L (19 U.S. gal.)	56 kW (75 HP)	★ 545 kg (1201 lb.) ★ 530 kg (1169 lb.)	★ 300 kg (661 lb.) ★ 291 kg (641 lb.)	★ 4 ★ 5
<b>162 SC</b>	4.9 m (16'-2")	2.2 m (85")	1.8 m (69")	0.8 m (30")	0.7 m (26")	0.5 m (20")	416 kg (918 lb.)	2.2 mm (.087")	1.8 mm (.072")	≤ 72 L (19 U.S. gal.)	56 kW (75 HP)	★ 545 kg (1201 lb.) ★ 530 kg (1169 lb.)	★ 300 kg (661 lb.) ★ 291 kg (641 lb.)	★ 4 ★ 5





## HOLIDAY® 162 DLX WS

SHOWN IN BLACK

WITH OPTIONS

- › Sonar
- › Fishing Package
- › Trolling motor



## HOLIDAY® 162 DLX SC

SHOWN IN BLUE



- 1 Storage under front deck
- 2 Storage compartment, driver side
- 3 Driver console (shown with Sonar Humminbird® PiranhaMAX™ 4, Tilt steering mechanism and slider for driver seat, and 160-watt AM/FM/Bluetooth® Jensen® Stereo options)
- 4 Twin console with black anodized walk-thru windshield with door (Holiday® 162 DLX WS only)
- 5 Optional stern telescopic boarding ladder, included in Deluxe Package Option
- 6 Optional 160-watt AM/FM/Bluetooth® Jensen® Stereo, included in Deluxe Package Option



AVAILABLE COLORS





# HOLIDAY® DLX MAX



## KEY STANDARD FEATURES

- › Reverse chine hull design
- › Carpeted bow and aft raised casting platforms with storage
- › 2-7 foot rod storages without support
- › No-FeedBack™ steering system
- › 12V bow trolling motor plug and receptacle with wiring harness
- › Driver seat on slider
- › Tilt steering wheel
- › Complete instrumentation: tachometer, speedometer, and trim gauge
- › 160-watt AM/FM/Bluetooth® Jensen® Stereo
- › 61 L/16 U.S. gal. bow SportFlo™ electric-filled aerated livewell
- › 2 folding seats
- › 23 L/6 U.S. gal. portable gas tank
- › Trailer cover

## HOLIDAY® 162 DLX WS MAX

- › Twin console with black anodized walk-thru tempered glass windshield with door
- › Bimini sun top connected to windshield, including the structure

## HOLIDAY® 162 DLX SC MAX

- › Black side console with quick release smoked windscreen

## HOLIDAY® 162 DLX WS MAX

	Center line	Beam	Chine width	Maximum depth	Approximate draft	Transom height	Approximate weight	Aluminum thickness (Bottom)	Aluminum thickness (Side)	Built-in gas tank	Maximum HP capacity	Maximum weight capacity	Maximum weight person capacity	Maximum person capacity
<b>162 WS MAX</b>	4.9 m (16'-2")	2.2 m (85")	1.8 m (69")	0.8 m (30")	0.7 m (26")	0.5 m (20")	435 kg (960 lb.)	2.2 mm (.087")	1.8 mm (.072")	Portable	45 kW (60 HP)	♣★ 499 kg (1100 lb.)	♣ 300 kg (661 lb.) ★ 291 kg (641 lb.)	♣ 4 ★ 5
<b>162 SC MAX</b>	4.9 m (16'-2")	2.2 m (85")	1.8 m (69")	0.8 m (30")	0.7 m (26")	0.5 m (20")	416 kg (918 lb.)	2.2 mm (.087")	1.8 mm (.072")	Portable	45 kW (60 HP)	♣★ 499 kg (1100 lb.)	♣ 300 kg (661 lb.) ★ 291 kg (641 lb.)	♣ 4 ★ 5



## HOLIDAY® 162 DLX WS MAX



1 Passenger console with glove box  
(WS MAX only)

2 Driver console

3 Carpeted bow raised casting platform  
with storage and livewell

4 Portable gas tank (23 L/6 U.S. gal.)

5 Storage under passenger console  
(WS MAX only)

6 7-foot side rod storage

## HOLIDAY® 162 DLX SC MAX



AVAILABLE COLOR





# AMAROK DL



## AMAROK 166 DL WS

### WITH OPTIONS

- › Superior Package
- › RSP Combo: removable aft flip seats
- › Sonar
- › Trolling motor

### KEY STANDARD FEATURES

- › Reverse chine hull design
- › Bow and aft raised casting platforms with storage
- › No-FeedBack™ steering system
- › Shelf storage, passenger side
- › 61 L/16 U.S. gal. bow SportFlo™ electric-filled aerated livewell
- › Rod holders, passenger side
- › In-floor lockable rod organizer for 5 rods
- › 2 folding seats
- › PrinceTrak system: extrusion allowing onboard tool fixing
- › Electric bilge pump
- › Deep self-draining splashwell

### AMAROK 166 DL WS

- › Twin console with black anodized walk-thru tempered glass windshield with door

### AMAROK 166 DL SC

- › Side console with quick release smoked windscreen

	Center line	Beam	Chine width	Maximum depth	Approximate draft	Transom height	Approximate weight	Aluminum thickness (Bottom)	Aluminum thickness (Side)	Built-in gas tank	Maximum HP capacity	Maximum weight capacity	Maximum weight person capacity	Maximum person capacity
<b>166 WS</b>	5.0 m (16'-6")	2.2 m (88")	1.8 m (71")	0.8 m (33")	0.7 m (28")	0.5 m (20")	472 kg (1040 lb.)	2.2 mm (.087")	1.8 mm (.072")	Portable	56 kW (75 HP)	★ ★ 623 kg (1373 lb.)	★ 375 kg (827 lb.)	★ 5
<b>166 SC</b>	5.0 m (16'-6")	2.2 m (88")	1.8 m (71")	0.8 m (33")	0.7 m (28")	0.5 m (20")	433 kg (954 lb.)	2.2 mm (.087")	1.8 mm (.072")	Portable	56 kW (75 HP)	★ ★ 623 kg (1373 lb.)	★ 375 kg (827 lb.)	★ 5
													★ 338 kg (745 lb.)	★ 6



## AMAROK 166 DL WS

WITH OPTIONS

- › Sonar
- › Trolling motor



## AMAROK 166 DL SC

WITH OPTIONS

- › Sonar
- › Trolling motor



1



4



2



5



3



6

- 1 Driver console (shown with Sonar Humminbird® PiranhaMAX™ 4 and Analog gauges options)
- 2 45 L/12 U.S. gal. portable gas tank
- 3 61 L/16 U.S. gal. bow SportFlo™ electric-filled aerated livewell

- 4 In-floor lockable rod organizer for 5 rods
- 5 2 folding fishing seats
- 6 Side shelf, on passenger side, with rod storage



AVAILABLE COLOR





# RESORTER® DL



## RESORTER® 160 DL SC

WITH OPTION

› Sonar

	Center line	Beam	Chine width	Maximum depth	Approximate draft	Transom height	Approximate weight	Aluminum thickness (Bottom)	Aluminum thickness (Side)	Built-in gas tank	Maximum HP capacity	Maximum weight capacity	Maximum weight person capacity	Maximum person capacity
<b>160 SC</b>	4.9 m (16'-0")	1.9 m (73")	1.6 m (63")	0.7 m (29")	0.4 m (17")	0.5 m (20")	278 kg (613 lb.)	1.8 mm (.072")	1.5 mm (.061")	Portable	30 kW (40 HP)	★ 453 kg (998 lb.)	★ 300 kg (661 lb.) ★ 244 kg (539 lb.)	★ ★ 4



## KEY STANDARD FEATURES

- › Reverse chine hull design
- › Front deck covered with marine grade vinyl
- › Bow raised casting platform with large storage compartment
- › Side console with quick release smoked windscreen
- › 61 L/16 U.S. gal. bow SportFlo™ electric-filled aerated livewell
- › 2-7 foot rod storages without support
- › 2 folding seats
- › Pressure-treated wood floor covered with marine grade vinyl
- › Electric bilge pump
- › Full-width self-draining splashwell
- › Emergency reboarding ladder

## RESORTER® 160 DL SC

WITH OPTION

- › Sonar



- 1 61 L/16 U.S. gal. bow SportFlo™ electric-filled aerated livewell
- 2 Storage for portable gas tank
- 3 Driver console
- 4 Large storage compartment under the bow casting platform
- 5 2 folding fishing seats
- 6 Storage on passenger side



AVAILABLE COLOR



# BT



## RESORTER® 160 BT

### KEY STANDARD FEATURES

#### HUDSON® 190 BT AND AMAROK 166 BT RESORTER® 160 BT

- › Reverse chine hull design
- › Bow and aft raised casting platforms with storage
- › Fuel gauge (Hudson® 190 BT only)
- › 12V or 24V bow trolling motor plug and receptable with wiring harness
- › SportFlo™ electric-filled aerated livewell 77 L/20 U.S. gal. stern on Hudson® 190 BT and 61 L/16 U.S. gal. bow on Amarok
- › Lockable rod organizer
- › 9-foot rod storage without support (Hudson® 190 BT only)
- › 2 folding seats
- › Pressure-treated wood floor covered with marine grade vinyl
- › Electric bilge pump
- › Deep self-draining splashwell
- › Reverse chine hull design
- › Marine grade carpet front deck
- › 49 L/13 U.S. gal. side SportFlo™ electric-filled aerated livewell
- › 7 foot rod storage without support
- › 2 folding seats
- › Pressure-treated wood floor covered with marine grade vinyl
- › Electric bilge pump
- › Full-width self-draining splashwell

#### YUKON® 140 BT

- › Semi-V hull with square chine
- › Side storage compartments located in the center of the boat
- › Split center seat
- › Parallel seats at stern
- › Bow bench seat
- › Seats covered with marine grade vinyl
- › Pressure-treated wood floor covered with marine grade vinyl
- › Full-width self-draining splashwell

	Center line	Beam	Chine width	Maximum depth	Approximate draft	Transom height	Approximate weight	Aluminum thickness (Bottom)	Aluminum thickness (Side)	Built-in gas tank	Maximum HP capacity	Maximum weight capacity	Maximum weight person capacity	Maximum person capacity
<b>HUDSON® 190 BT</b>	5.8 m (19'-0")	2.3 m (91")	2.0 m (78")	0.9 m (35")	0.8 m (33")	0.6 m (25")	531 kg (1170 lb.)	2.5 mm (.100")	1.8 mm (.072")	≤ 95 L (25 U.S. gal.)	67 kW (90 HP)	★ 611 kg (1348 lb.) ★ 623 kg (1374 lb.)	★ 375 kg (827 lb.) ★ 338 kg (746 lb.)	★ 5 ★ 6
<b>AMAROK 166 BT</b>	5.0 m (16'-6")	2.2 m (88")	1.8 m (71")	0.8 m (33")	0.7 m (28")	0.5 m (20")	433 kg (954 lb.)	2.2 mm (.087")	1.8 mm (.072")	Portable	45 kW (60 HP)	★ ★ 503 kg (1109 lb.)	★ 300 kg (661 lb.) ★ 295 kg (650 lb.)	★ 4 ★ 5
<b>RESORTER® 160 BT</b>	4.9 m (16'-0")	1.9 m (73")	1.6 m (63")	0.7 m (29")	0.4 m (17")	0.5 m (20")	245 kg (540 lb.)	1.8 mm (.072")	1.5 mm (.061")	Portable	30 kW (40 HP)	★ ★ 453 kg (998 lb.)	★ 300 kg (661 lb.) ★ 244 kg (539 lb.)	★ ★ 4 ★ 4
<b>YUKON® 140 BT</b>	4.3 m (14'-3")	1.7 m (68")	1.4 m (57")	0.7 m (28")	0.4 m (17")	0.5 m (20")	177 kg (390 lb.)	1.5 mm (.061")	1.5 mm (.061")	Portable	19 kW (25 HP)	★ 373 kg (822 lb.) ★ 372 kg (821 lb.)	★ 225 kg (496 lb.) ★ 214 kg (471 lb.)	★ 3 ★ 4



## HUDSON® 190 BT

WITH OPTIONS

- › Sonar
- › Trolling motor



## AMAROK 166 BT

WITH OPTION

- › Trolling motor



## RESORTER® 160 BT



## YUKON® 140 BT

WITH OPTIONS

- › Electric Package: front livewell, control panel, navigation lights, and bilge pump
- › Galvanized trailer



- 1 In-floor lockable rod storage (Hudson® 190 BT and Amarok 166 BT only) (Hudson® 190 BT storage shown)
- 2 Storage under the bow casting platform (except Yukon® 140 BT) (Hudson® 190 BT storage shown)
- 3 Carling switch panel with indicator lights (except Yukon® 140 BT) (fuel gauge on Hudson® 190 BT only)
- 4 12V or 24V bow trolling motor plug and receptacle with wiring harness (Hudson® 190 BT and Amarok 166 BT only)
- 5 2 folding seats (except Yukon® 140 BT)
- 6 Storage for portable gas tank (except Hudson® 190 BT)



AVAILABLE COLOR





# UTILITIES AND CARTOPS

## KEY STANDARD FEATURES

- › Semi-V hull with square chine (reverse chine hull design on Starfish® 16 L WT and Starfish® 16 WT)
- › Exterior urethane paint, with a glossy finish, with decal package
- › Non-skid anti-glare interior paint finish
- › Split center seat (except Fisherman 14 and Ungava® 12)
- › Parallel seats at stern
- › Bow bench seat (except Ungava® 12)
- › Durable ribbed polyethylene seat covering
- › Full-width self-draining splashwell (except Fisherman 14 and Ungava® 12)



## STARFISH® 16 L WT



## SPRINGBOK® 16 L WT



## STARFISH® 16 WT



## SPRINGBOK® 16 WT







- 1 Split center seat (except Fisherman 14 and Ungava® 12)
- 2 Bow bench seat (except Ungava® 12)
- 3 Parallel seats at stern
- 4 Storage compartment with lid (except Fisherman 14 and Ungava® 12)
- 5 Optional sun top
- 6 Stern handles



AVAILABLE COLOR

**YUKON® 14 L WT**



**FISHERMAN 14**



**YUKON® 14 WT**



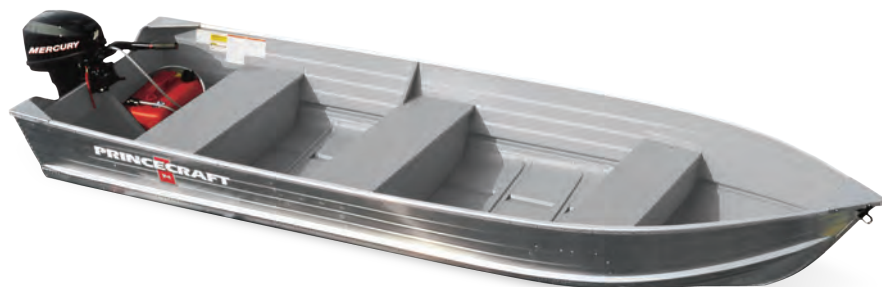
**UNGAVA® 12**



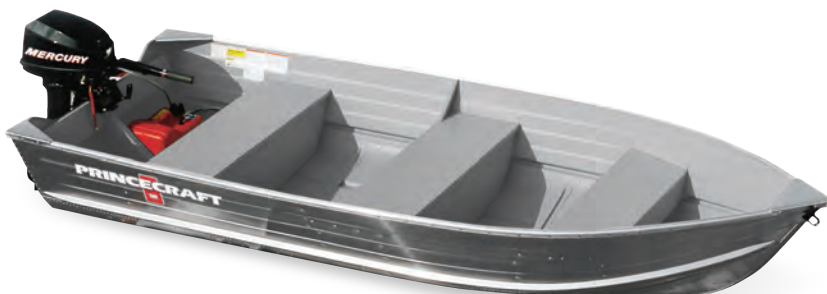


# UTILITIES AND CARTOPS

## SCAMPER® 14



## SEASPRITE® 12



- 1 Bow eye
- 2 Bow bench seat
- 3 Stern handles
- 4 Storage for portable gas tank



AVAILABLE COLOR



### KEY STANDARD FEATURES

- › Semi-V hull
- › Decal package
- › Non-skid anti-glare interior paint finish
- › Bow bench seat
- › Aluminum clad transom
- › Bow eye and stern handles



		STARFISH® 16 L WT	STARFISH® 16 WT	SPRINGBOK® 16 L WT	SPRINGBOK® 16 WT	YUKON® 14 L WT	YUKON® 14 WT	FISHERMAN 14	UNGAVA® 12	SCAMPER® 14	SEASPRITE® 12
STANDARD FEATURES	HULL & DECK FEATURES	5052-H36 marine grade aluminum alloy	•	•	•	•	•	•	•	•	•
		NMMA® & Transport Canada certified	•	•	•	•	•	•	•	•	•
		Exterior urethane paint, with a glossy finish, with decal package	•	•	•	•	•	•	•		
		Decal package								•	•
		Non-skid anti-glare interior paint finish	•	•	•	•	•	•	•	•	•
		Hull ( <b>R</b> = reverse chine, <b>S</b> = semi-V hull with square chine, <b>V</b> = semi-V hull)	<b>R</b>	<b>R</b>	<b>S</b>	<b>S</b>	<b>S</b>	<b>S</b>	<b>S</b>	<b>V</b>	<b>V</b>
		Aluminum clad transom	•	•	•	•	•	•	•	•	•
		Full-width self-draining splashwell	•	•	•	•	•				
		Twin plating at the chine	•	•	•	•	•	•	•		
		Heavy-duty tubular seat to gunnel braces	•	•	•	•	•	•	•	•	•
		Bow eye and stern handles	•	•	•	•	•	•	•	•	•
	SEATS	Split center seat	•	•	•	•	•				
		Parallel seats at stern	•	•	•	•	•	•	•		
		Bulkhead center seat	•	•	•	•	•	•	•	•	•
OPTIONS		Bow bench seat	•	•	•	•	•			•	•
		Durable ribbed polyethylene seat covering	•	•	•	•	•	•	•		
		Deployable ladder (in pouch)	<b>0</b>	<b>0</b>	<b>0</b>	<b>0</b>	<b>0</b>	<b>0</b>	<b>0</b>	<b>0</b>	<b>0</b>
		Seat Package: folding seat, detachable swivel plate with auto-lock handle and extrusion	<b>0</b>	<b>0</b>	<b>0</b>	<b>0</b>	<b>0</b>	<b>0</b>	<b>0</b>		
COLORS		Sun top	<b>0</b>	<b>0</b>	<b>0</b>	<b>0</b>	<b>0</b>	<b>0</b>	<b>0</b>		
		Galvanized utility trailer with 12" tires	<b>0</b>	<b>0</b>	<b>0</b>	<b>0</b>	<b>0</b>	<b>0</b>	<b>0</b>	<b>0</b>	<b>0</b>
		Blue	•	•	•	•	•	•	•		
		Aluminum								•	•

\* For complete standard features and options, visit our Website at [princecraft.com](http://princecraft.com)

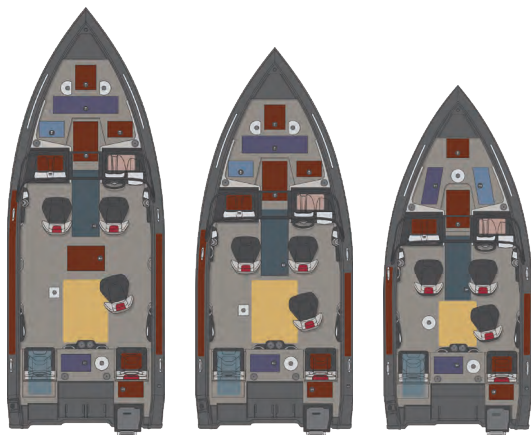
• Standard **0** Option

	Center line	Beam	Chine width	Maximum depth	Approximate draft	Transom height	Approximate weight	Aluminum thickness (Bottom)	Aluminum thickness (Side)	Built-in gas tank	Maximum HP capacity	Maximum weight capacity	Maximum weight person capacity	Maximum person capacity
<b>STARFISH® 16 L WT</b>	4.9 m (16'-0")	1.9 m (73")	1.6 m (63")	0.7 m (29")	0.4 m (16")	0.5 m (20")	163 kg (359 lb.)	1.8 mm (.072")	1.5 mm (.061")	Portable	30 kW (40 HP)	✦ 591 kg (1302 lb.) ★ 591 kg (1303 lb.)	✦ 375 kg (826 lb.) ★ 383 kg (844 lb.)	✦ 5 ★ 6
<b>STARFISH® 16 WT</b>	4.9 m (16'-0")	1.9 m (73")	1.6 m (63")	0.7 m (29")	0.4 m (17")	0.4 m (15")	141 kg (310 lb.)	1.8 mm (.072")	1.5 mm (.061")	Portable	30 kW (40 HP)	✦ 498 kg (1097 lb.) ★ 499 kg (1100 lb.)	✦ 300 kg (661 lb.) ★ 291 kg (641 lb.)	✦ 4 ★ 5
<b>SPRINGBOK® 16 L WT</b>	4.9 m (16'-0")	1.7 m (68")	1.4 m (57")	0.7 m (28")	0.4 m (17")	0.5 m (20")	137 kg (301 lb.)	1.5 mm (.061")	1.5 mm (.061")	Portable	22 kW (30 HP)	✦ 522 kg (1150 lb.) ★ 491 kg (1082 lb.)	✦ 300 kg (661 lb.) ★ 332 kg (732 lb.)	✦ 4 ★ 5
<b>SPRINGBOK® 16 WT</b>	4.9 m (16'-0")	1.7 m (68")	1.4 m (57")	0.7 m (28")	0.4 m (17")	0.4 m (15")	129 kg (285 lb.)	1.5 mm (.061")	1.5 mm (.061")	Portable	22 kW (30 HP)	✦ 444 kg (978 lb.) ★ 413 kg (910 lb.)	✦ 225 kg (496 lb.) ★ 254 kg (560 lb.)	✦ 3 ★ 4
<b>YUKON® 14 L WT</b>	4.3 m (14'-3")	1.7 m (68")	1.4 m (57")	0.7 m (28")	0.4 m (17")	0.5 m (20")	127 kg (280 lb.)	1.5 mm (.061")	1.5 mm (.061")	Portable	19 kW (25 HP)	✦ 411 kg (906 lb.) ★ 411 kg (905 lb.)	✦ 300 kg (661 lb.) ★ 252 kg (555 lb.)	✦ 4 ★ 4
<b>YUKON® 14 WT</b>	4.3 m (14'-3")	1.7 m (68")	1.4 m (57")	0.7 m (28")	0.4 m (17")	0.4 m (15")	113 kg (250 lb.)	1.5 mm (.061")	1.5 mm (.061")	Portable	19 kW (25 HP)	✦★ 372 kg (821 lb.)	✦ 225 kg (496 lb.) ★ 214 kg (471 lb.)	✦ 3 ★ 4
<b>FISHERMAN 14</b>	4.3 m (14'-0")	1.5 m (60")	1.3 m (51")	0.7 m (26")	0.4 m (13")	0.4 m (15")	91 kg (201 lb.)	1.5 mm (.061")	1.3 mm (.051")	Portable	15 kW (20 HP)	✦ 373 kg (821 lb.) ★ 331 kg (729 lb.)	✦ 225 kg (496 lb.) ★ 225 kg (495 lb.)	✦ 3 ★ 4
<b>UNGAVA® 12</b>	3.7 m (12'-0")	1.5 m (60")	1.3 m (51")	0.6 m (25")	0.4 m (13")	0.4 m (15")	78 kg (171 lb.)	1.5 mm (.061")	1.3 mm (.051")	Portable	11 kW (15 HP)	✦ 317 kg (699 lb.) ★ 318 kg (700 lb.)	✦ 225 kg (496 lb.) ★ 211 kg (466 lb.)	✦ 3 ★ 4
<b>SCAMPER® 14</b>	4.3 m (14'-4")	1.5 m (58")	1.1 m (45")	0.5 m (21")	0.4 m (13")	0.4 m (15")	68 kg (150 lb.)	1.3 mm (.051")	1.3 mm (.051")	Portable	11 kW (15 HP)	✦ 341 kg (753 lb.) ★ 340 kg (750 lb.)	✦ 225 kg (496 lb.) ★ 234 kg (516 lb.)	✦ 3 ★ 4
<b>SEASPRITE® 12</b>	3.7 m (12'-4")	1.5 m (58")	1.1 m (45")	0.5 m (21")	0.4 m (13")	0.4 m (15")	59 kg (130 lb.)	1.3 mm (.051")	1.3 mm (.051")	Portable	7.5 kW (10 HP)	✦ 280 kg (617 lb.) ★ 274 kg (603 lb.)	✦ 150 kg (330 lb.) ★ 190 kg (418 lb.)	✦ 2 ★ 3



# TECHNICAL DRAWINGS

## PLATINUM SE



**PLATINUM SE  
227**

P. 10

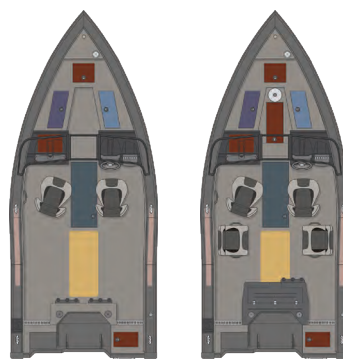
**PLATINUM SE  
207**

P. 10

**PLATINUM SE  
186**

P. 12

## KAPTURE®



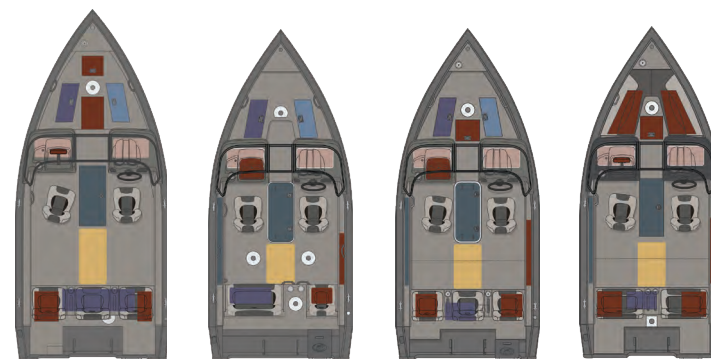
**KAPTURE®  
187**

P. 14

**KAPTURE®  
187 + OPTIONS**

P. 14

## SPORT



**SPORT  
182**

P. 16

**SPORT  
177**

P. 16

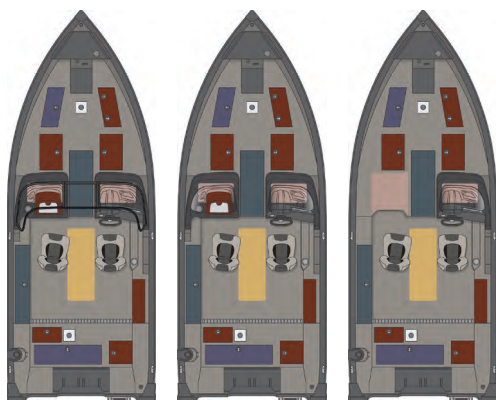
**SPORT  
172**

P. 18

**SPORT  
172 MAX**

P. 18

## XPEDITION®



**XPEDITION®  
200 (WS VERSION)**

P. 22

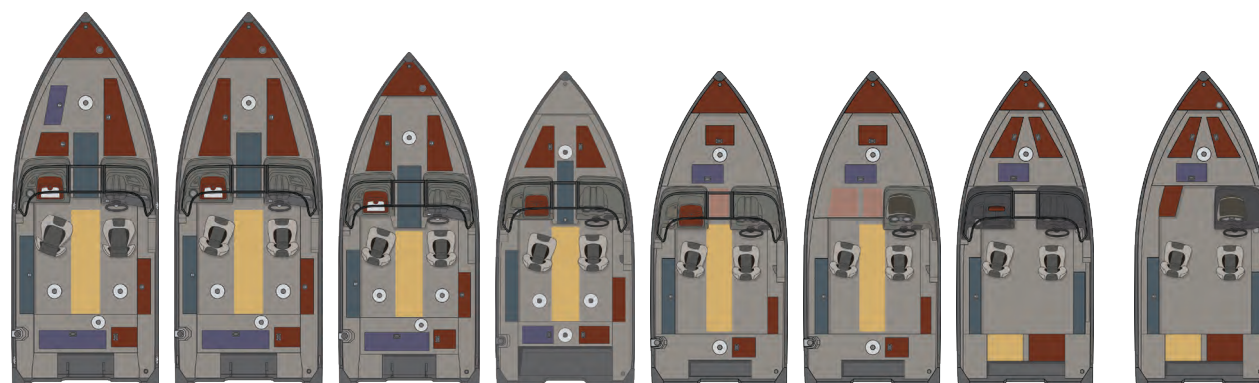
**XPEDITION®  
200 (DC VERSION)**

P. 22

**XPEDITION®  
200 (SC VERSION)**

P. 22

## DLX



**HUDSON®  
190 DLX WS  
(TOURNAMENT EDITION)**

P. 24

**HUDSON®  
190 DLX WS**

P. 24

**HUDSON®  
170 DLX WS**

P. 24

**NANOOK®  
168 DLX WS**

P. 26

**HOLIDAY®  
162 DLX WS**

P. 28

**HOLIDAY®  
162 DLX SC**

P. 28

**HOLIDAY®  
162 DLX WS MAX**

P. 30

**HOLIDAY®  
162 DLX SC MAX**

P. 30



## DL



**AMAROK**  
**166 DL WS**  
P. 32

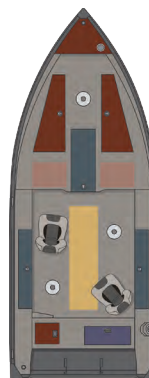


**AMAROK**  
**166 DL SC**  
P. 32



**RESORTER®**  
**160 DL SC**  
P. 34

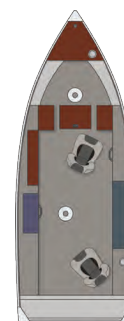
## BT



**HUDSON®**  
**190 BT**  
P. 36



**AMAROK**  
**166 BT**  
P. 36

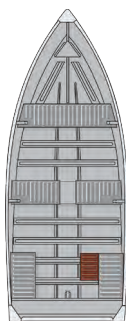


**RESORTER®**  
**160 BT**  
P. 36

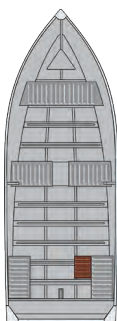


**YUKON®**  
**140 BT**  
P. 36

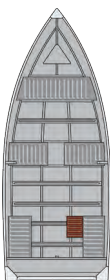
## UTILITIES AND CARTOPS



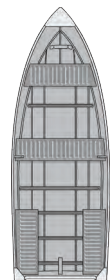
**STARFISH®**  
**16 L / 16 WT**  
P. 38



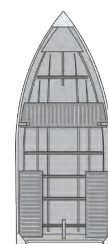
**SPRINGBOK®**  
**16 L / 16 WT**  
P. 38



**YUKON®**  
**14 L / 14 WT**  
P. 39



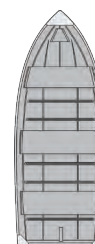
**FISHERMAN**  
**14**  
P. 39



**UNGAVA®**  
**12**  
P. 39



**SCAMPER®**  
**14**  
P. 40



**SEASPRITE®**  
**12**  
P. 40

### LEGEND

-  LIVEWELL
-  STORAGE COMPARTMENT
-  OPEN SPACE STORAGE COMPARTMENT
-  ROD STORAGE COMPARTMENT
-  FUEL TANK
-  ICEBOX



# COLORS AND FINISHING TOUCHES

## PLATINUM SE

### METALLIC GREY



### METALLIC RED



### METALLIC BLUE



## KAPTURE®

### BLACK

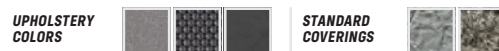


## SPORT

### BLACK



### ANTHRACITE GREY



### BLUE



### MAX (SPORT 172 MAX ONLY)



### BLACK



PRINCECRAFT® TEAM SPECIAL DECALS, AVAILABLE AS AN OPTION WITH ALL COLOR CHOICES; NOT AVAILABLE WITH THE MAX

### BLACK



DELUXE DECALS, INCLUDING 3D CHROME PRINCECRAFT® LOGO, AVAILABLE AS AN OPTION WITH ALL COLOR CHOICES; NOT AVAILABLE WITH THE MAX

## XPEDITION®

### BLACK



### MATTE BLACK (OPTIONAL)



### BLACK



PRINCECRAFT® TEAM SPECIAL DECALS, AVAILABLE AS AN OPTION WITH ALL COLOR CHOICES

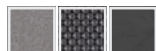


## DLX

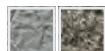
### BLACK



UPHOLSTERY  
COLORS



STANDARD  
COVERINGS



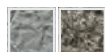
### BLUE



UPHOLSTERY  
COLORS



STANDARD  
COVERINGS



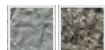
### MAX (HOLIDAY® 162 DLX WS MAX AND SC MAX ONLY)



UPHOLSTERY  
COLORS



STANDARD  
COVERINGS



### BLACK



PRINCECRAFT® TEAM SPECIAL DECALS, AVAILABLE AS AN OPTION  
WITH ALL COLOR CHOICES; NOT AVAILABLE WITH THE MAX

### BLACK



DELUXE DECALS, INCLUDING 3D CHROME PRINCECRAFT® LOGO,  
AVAILABLE AS AN OPTION WITH ALL COLOR CHOICES; NOT AVAILABLE WITH THE MAX

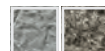
### RED



UPHOLSTERY  
COLORS



STANDARD  
COVERINGS



### ANTHRACITE GREY



UPHOLSTERY  
COLORS



STANDARD  
COVERINGS



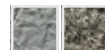
### TFT / RED (HUDSON® 190 DLX WS ONLY - OPTIONAL)



UPHOLSTERY  
COLORS



STANDARD  
COVERINGS



### TFT / ANTHRACITE GREY (HUDSON® 190 DLX WS ONLY - OPTIONAL)



UPHOLSTERY  
COLORS



STANDARD  
COVERINGS

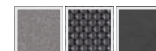


## DL AND BT

### BLACK



UPHOLSTERY  
COLORS



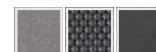
STANDARD  
COVERINGS



### BLACK (RESORTER® 160 AND YUKON® 140 ONLY)



UPHOLSTERY  
COLORS



STANDARD  
COVERINGS



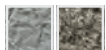
### BLACK (WITH SUPERIOR DECAL PACKAGE, OPTIONAL ON DL SERIES ONLY)



UPHOLSTERY  
COLORS

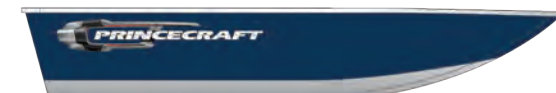


STANDARD  
COVERINGS

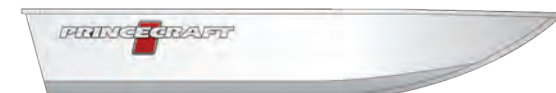


## UTILITIES AND CARTOPS

### BLUE (EXCEPT SCAMPER® 14 AND SEASPRITE® 12)



### ALUMINUM (SCAMPER® 14 AND SEASPRITE® 12 ONLY)

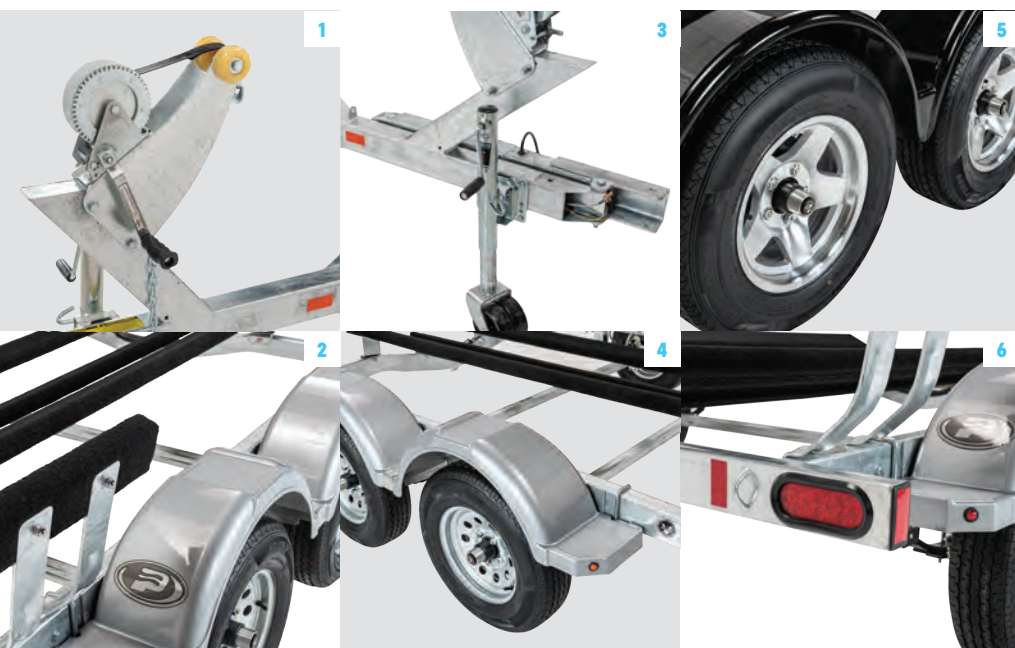




# CUSTOM MULTIFUNCTION TRAILERS

EACH OF OUR TRAILERS IS CUSTOM-MADE ACCORDING TO THE HIGHEST STANDARDS OF QUALITY.

THE OBJECTIVE IS TO OFFER TOPNOTCH STABILITY AND MANEUVERABILITY ON THE ROAD, IN ADDITION TO EASY LOADING AND UNLOADING.



1 Heavy-duty winch\*

2 Carpeted fixed bunks and load guides\*

3 Swing tongue\*

4 Fenders with step pads\*

5 Optional mag wheels\*

6 Waterproof recessed LED lights\*

\* On most models or optional



**SE PAINTED TRAILER WITH STEEL FENDERS AND SWING TONGUE**  
(Platinum SE Series only)



**GALVANIZED STEEL TRAILER WITH SWING TONGUE**

## AN EXTRA DURABLE FRAME

- › Extra sturdy tubular structure
- › Brake cables and circuits are inserted in a steel tube to protect them from the elements
- › Guaranteed long term reliability

## SPECIAL FEATURES

- › Special Features
- › Sturdy winch
- › Swivel tongue jack\*
- › Soldered attachment for optional transom saver motor support
- › Galvanized steel wheelbase for rust protection
- › Practical swing tongue: saves space, stores easily
- › Composite fenders with built-in step pads
- › Radial tires (standard on most models)
- › Aluminum alloy STAR mag wheels (optional on certain models)

## OPTIMAL SAFETY

- › Superior on-road stability and handling
- › Watertight LED light system
- › Factory-balanced wheels
- › Double safety chain
- › Sealed hubs
- › Complies with NMMA® and Transport Canada standards

## STRATEGICALLY PLACED BUNKS AND LOAD GUIDES

- › Custom design
- › Marine carpet-covered load guides protect your boat's hull (certain models only)
- › Bunks remain in constant contact with the hull for optimally distributed support
- › Easier loading and unloading

\* On most models or optional



# INGENIOUS LIVEWELLS

A MUST-HAVE FOR FISHING, GOOD LIVEWELLS HELP KEEP YOUR CATCH HEALTHY AND FRESH.

PRINCECRAFT® OFFERS YOU THREE TOP-QUALITY OPTIONS TO HELP YOU GET THE MOST OUT OF EACH AND EVERY DAY OF FISHING!



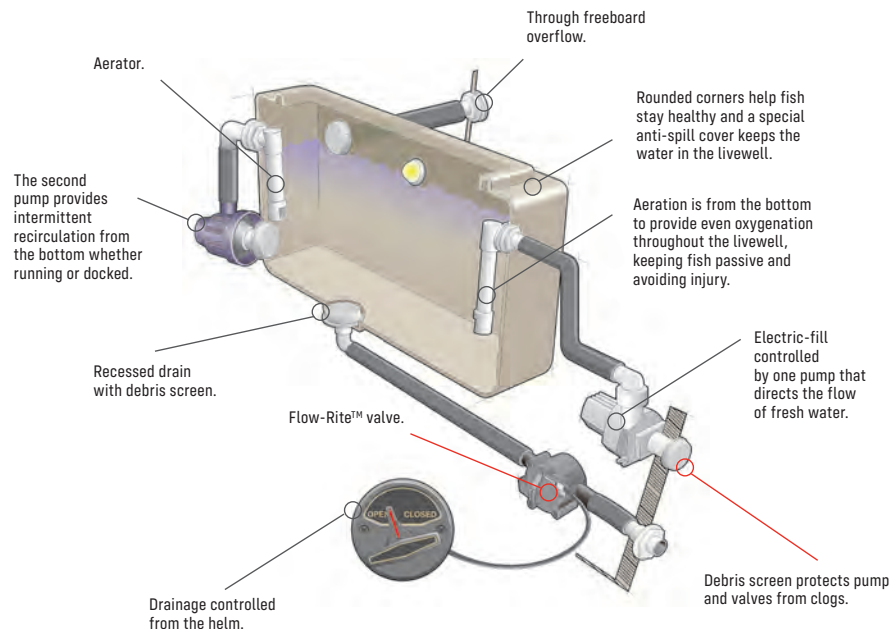
## MOST PRINCECRAFT® TRAILERS ARE EQUIPPED WITH THIS SYSTEM

This ingenious system combines the advantages of grease and oil to create an ultra high performance lubricant. At room temperature, its viscosity is similar to that of grease. But as the bearings heat up, the lubricant becomes more fluid coating the bearings better to more effectively reduce friction and dissipate the heat generated during towing.

Each bearing is encased in a completely sealed, airtight, leak-proof, pressurized chamber.

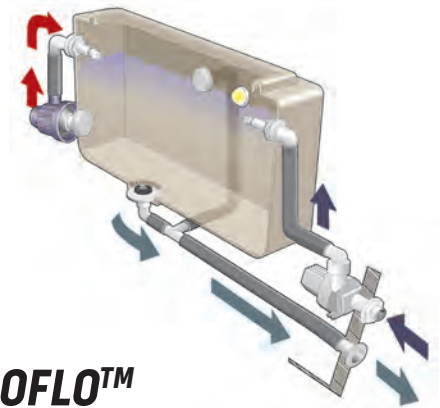
## PROFLO™ PLUS EXCLUSIVE

The ProFlo™ Plus livewell is virtually maintenance free, and features automatic filling and recirculation that lets you focus on fishing. Its dual-pump system keeps your bait alive and your catch beautifully fresh, whether you're cruising the open water or tied up at the dock.



### Models featuring ProFlo™ Plus livewell system

Platinum SE Series	Xpedition® Series
--------------------	-------------------



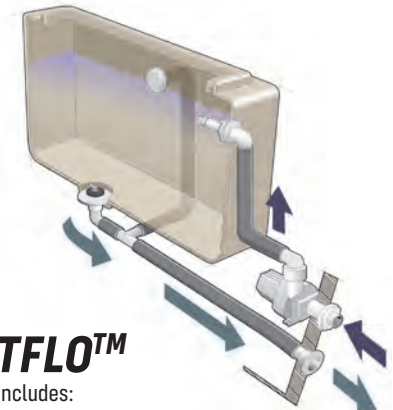
## PROFLO™

Includes all SportFlo™ features, plus:

- › A dual pump system that keeps water recirculating on the water or at the dock
- › Intermittent recirculation to control water aeration<sup>1</sup>
- › A light<sup>1</sup>

### Models featuring ProFlo™ livewell system

Sport 182	Sport 177	Kapture® Series
-----------	-----------	-----------------



## SPORTFLO™

This system includes:

- › A pump for filling the tank and aerating the water
- › An overflow system that empties to the outside
- › Protection filter on the filling pump
- › An anti-spill cover<sup>1</sup>

### Models featuring SportFlo™ livewell system

Sport 172	DLX Series
Sport 172 MAX	DL and BT Series (except Yukon® 140 BT)

<sup>1</sup> On most models



# CANVAS AND COVERS: A PERFECT FIT

**PRINCECRAFT® CANVAS AND COVERS ARE SPECIALLY DESIGNED  
TO FIT YOUR BOAT.**

What's more, almost all our boats come with snap buttons installed in our factory using extremely precise templates for a perfect, effortless fit.

At Princecraft® we provide quality products from bow to stern!

**SUN TOP WITH BIMINI CANVAS CONNECTED TO WINDSHIELD**



**FULL TOP**



**TRAILER COVER**



**COCKPIT STAND-UP HIGH TOP WITH TONNEAU COVER  
AND CURTAINS CONNECTED TO WINDSHIELD  
(KAPTURE® SERIES ONLY)**



**SUN TOP WITH BIMINI CANVAS ON PLATINUM SE SERIES**



**SUN TOP FOR UTILITIES**





# PRINCETRAK/ RAILBLAZA® SYSTEM

**RAILBLAZA®**  
HOLD EVERYTHING...

EXTRUSION ALLOWING ONBOARD  
RAILBLAZA® TOOL ATTACHMENT

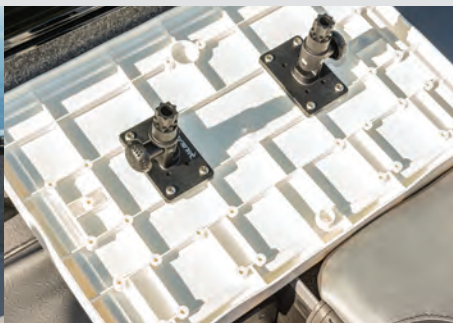
**FISHING ROD SUPPORT**



**CUP HOLDERS AND STORAGE COMPARTMENT**



**STURDY TABLE**



## FISHING PACKAGE\*

\* Optional on DLX Series (except Holiday® 162 DLX WS MAX and Holiday® 162 DLX SC MAX) and Hudson® 190 BT.

**TOURNAMENT FISHING TEAM (TFT) GRAPHICS**



**FLAT SEAT BASES ON FISHING PLATFORMS**



**DELUXE FOLDING SEATS**



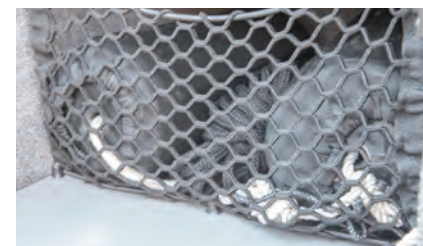
**FISH RULER**



**QUICK ROD STORAGE**



**NET(S) ADDITION UNDER CONSOLE(S)**

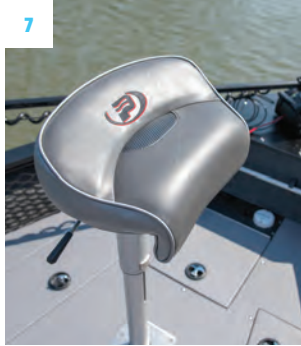
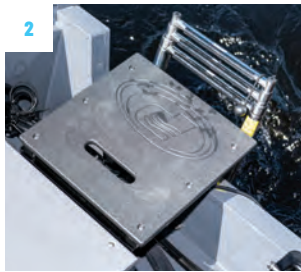


**NET ADDITION ON BOW PLATFORM**



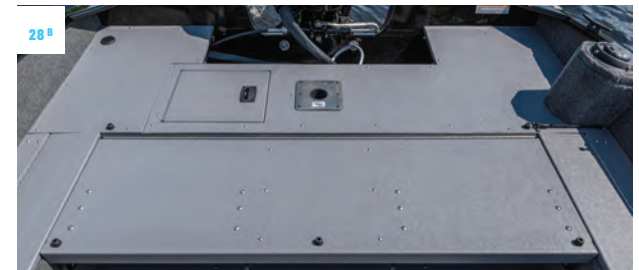
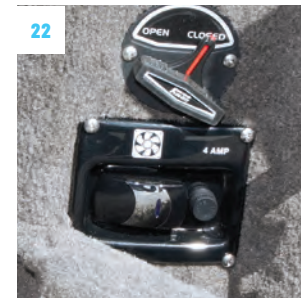
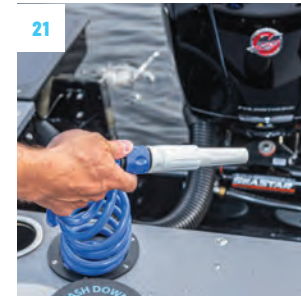


# OPTIONAL EQUIPMENT





For complete standard features and options, visit our Website at [princecraft.com](http://princecraft.com)



- 1** Stainless steel telescopic ladder **2** Rear boarding platform **3** Folding seat **4** Deluxe folding seat
- 5** Deluxe convertible seat (Platinum SE Series) **6** Heated reclining captain's chair with adjustable armrests (Platinum SE Series) **7** Bicycle seat package including bicycle seat and adjustable post **8** Side bench with storage compartment underneath **9** Reclining captain's chair with adjustable armrests (Kapture® Series only)
- 10** Control for Kicker® engine **11** Kicker® engine **12** 160-watt AM/FM/Bluetooth® Jensen® Stereo **13** Mercury® SmartCraft™ gauges **14** Driver seat on slider **15** Ski pylon **16** Snap-in textured marine mat **17** Tilt steering wheel
- 18** Downrigger supports (2) **19** Bow rider seat cushions **20** Battery charger (many models available)
- 21** Wash down system **22** ACS system (Advanced Circulation System): ventilation in storage compartments (bow platform) **23** Head with holding tank and pump out system **24** Battery switch: onboard power shutdown (mandatory with Verado)
- 25** SeaStar® hydraulic steering system **26** Multifunction Simrad® Go7 touch screen **27** Multifunction Simrad® NSS EVO 3 touch screen **28** RSP Combo: removable aft flip seats that can convert into a large casting platform including 2 cup holders **29** Active Trim: automatic trim system





# PRINCECRAFT®



**PLEASE READ CAREFULLY:** Dimensions, capacities, ratings, and additional specifications, plus complete warranty and service information, are available from your Princecraft® dealer. Product illustrations and data within this catalog are based upon information available at the time of publication. Not all accessories shown in pictures or described herein are standard equipment or even available as options. Specification measurements are approximations and subject to variance. Because Princecraft® is dedicated to constant product improvements, Princecraft® reserves the right to make changes without prior notice or obligation. Not all model year boats may contain all of the features or meet the specifications described herein. Ask your Princecraft® dealer for the most current product specifications prior to purchase. Some of the equipment shown separately or on products illustrated in this catalog may be optional at extra cost. Options and features are subject to change without notice. Princecraft® is a member in good standing of the National Marine Manufacturers Association (NMMA) USA and Canada. All boats comply with Canadian Coast Guard and U.S. Coast Guard regulations. All Princecraft® boats are in compliance with NMMA's Boat Certification Program.

Special thanks to: Mercury Marine®, Rapala®, Coleman®, Cannon Downriggers, Stearns®.

**FOR MORE INFORMATION** on our boats, to check out our videos, or to find your nearest dealer, visit our Website at [princecraft.com](http://princecraft.com) or call us at **1 800 395-8858**

**IN CANADA:** Princecraft® Boats Inc., A Brunswick Company, 725 Saint-Henri Street, Princeville (Quebec) G6L 5C2

**IN THE UNITED STATES:** Princecraft® U.S., A Brunswick Company, 26125 N Riverwoods Blvd, Suite 500, Mettawa, IL 60045  
Princecraft® factory-packaged boats are available with various horsepower Mercury® outboards. [www.mercurymarine.com](http://www.mercurymarine.com)